



**PLEASE FOLLOW THESE INSTRUCTIONS TO
UPDATE THE POSTAGE RATES IN YOUR SCALE**

Model: FP Flexiscale – Models FP3 & FP5



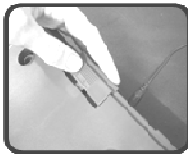
STEP 1

Turn the power 'OFF' using the switch at rear of scale
Failure to not switch off may damage your scales



STEP 2

Remove the weighing platform



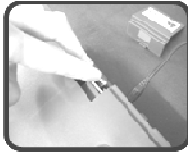
STEP 3

Remove the rate chip cover



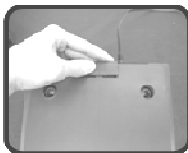
STEP 4

Remove the old rate chip from the scales



STEP 5

Insert the new rate chip with the chip facing away from the scale and push down firmly



STEP 6

Slide the rate chip cover back on



STEP 7

Reinstall the weighing platform onto the scale



STEP 8 - Switch the scale back 'ON'

The display will show 'ACTIVE NEW RATES?' confirm with enter, the scale will copy the new rates into its memory, the scale will then be ready to use with the new postal rates

IF ANY OF THE ABOVE STEPS FAIL, PLEASE START AGAIN FROM STEP 1. IF YOU ARE STILL HAVING DIFFICULTIES, PLEASE VISIT OUR WEBSITE www.fpmailing.co.uk